



# NOR'EASTER



*Lakeside Elevation*

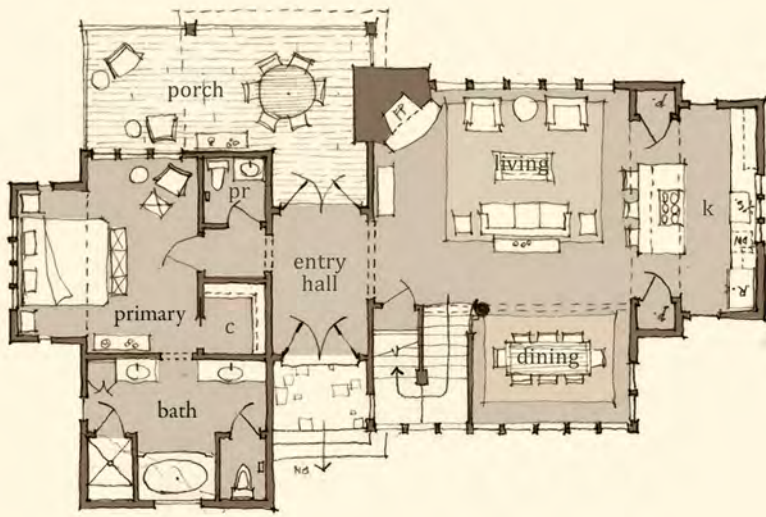
- Crossroads-styled farmhouse architecture
- Four bedrooms, four and one-half bathrooms
- Spacious kitchen-dining-living design and corner stone fireplace
- Fully appointed kitchen design with Viking appliances
- Main level primary suite with masterful design details
- Expansive covered deck for outdoor living on main
- Fabulous lake level living with wet bar and covered terrace for entertaining
- Thoughtfully designed with lake-prep storage room
- 2,413 sq. ft. of conditioned space



*Street Side Elevation*

PRICE: Pricing will depend on final features and lot selection.

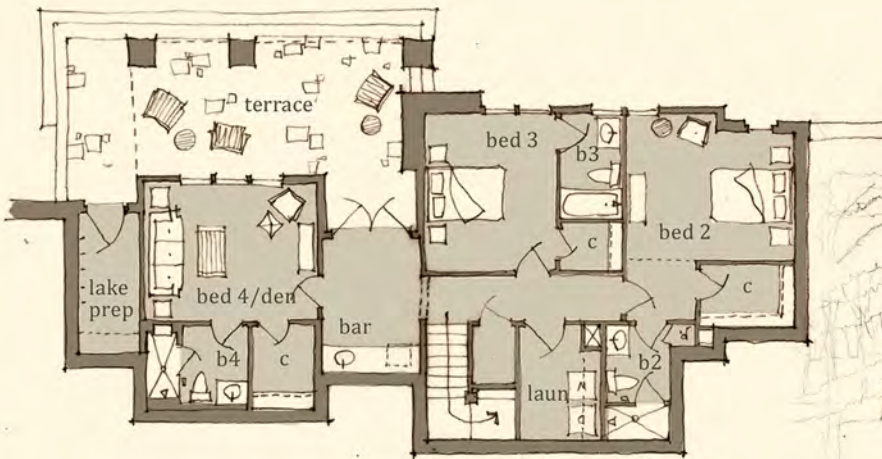
For additional information about Russell Lands On Lake Martin neighborhoods, call 256.215.7011 or visit [www.RussellLandsOnLakeMartin.com](http://www.RussellLandsOnLakeMartin.com).



*Main Level*

NOR'EASTER

1,337 Conditioned Sq. Ft.



*Lake Level*

NOR'EASTER

1,076 Conditioned Sq. Ft.